



WISCONSIN

FPHS cost and capacity assessment

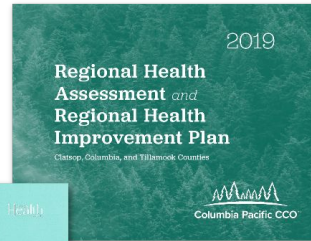
A SOCIAL IMPACT COMPANY

»redegroup

.....

bringing clarity, visibility, and equity
to complex public health challenges

what we do



We support public health evaluation, research, facilitation, training, planning, and technical assistance

We work with clients who share our values of centering equity and learning together to imagine and create healthier communities

who we are

A SOCIAL IMPACT COMPANY
»redegrou**p**



JILL HUTSON
chief executive officer



ROBB HUTSON
president



ALEX MUVUA
managing consultant



BECK WRIGHT
*evaluation lead +
senior consultant*



ELENA RIVERA
senior consultant



ERIN CHARPENTIER
design director



MAKINNA MILES
consultant



ELIZABETH PASCAL
consultant

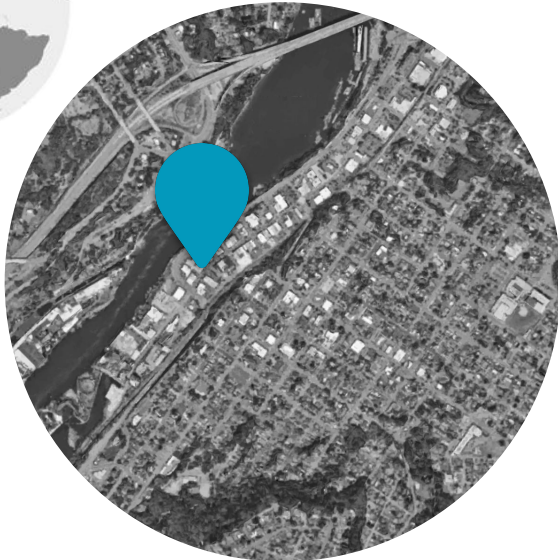


ELISABETH CASTILLO
associate



KC Thompson
associate

where we are



Our office is located in Oregon City, Oregon. We also have staff in Texas and Colorado.

As an Oregon-based firm, we sit on traditional lands and waterways of the Clackamas, Chinook Bands, Kalapuya, Kathlamet, Molalla, Multnomah, Tualatin, Tumwater, Wasco and many other tribes of the Willamette Valley who made their homes along the Columbia and Willamette Rivers for the last 11,000 years and who continue to live and work here.

Project Team

Rede Group has been working to improve public health with tribal, local, and state governments for the past 13 years. Rede has experience with several statewide public health modernization/foundational public health services projects.



PROJECT LEAD

Jill Hutson



EVALUATION LEAD

Beck Wright



ANALYST

Alex Muvua



DESIGN LEAD

Erin Charpentier

PROJECT LEAD

Jill Huston, MA (SHE, HER)

As Project Lead, Jill is responsible for all deliverables in this project. In addition to overall leadership, she will focus on training and technical assistance, data interpretation, messaging, and reporting.

Jill has over 25 years of experience leading, researching, analyzing, developing, and implementing successful public policy campaigns and initiatives.

PROJECT-SPECIFIC QUALIFICATIONS:

- Technical assistance and review of Washington State Department of Public Health, Foundation Public Health Services Evaluation. 2019-present
- Co-Project Lead for the Public Health Response to the COVID-19 Pandemic in Oregon (statewide evaluation). 2022-present
- Led Coalition of Local Health Officials, Public Health Modernization Roadmap and Toolkit. 2018-19
- Lead consultant on numerous local public health FPHS Projects. 2017 - present



EVALUATION LEAD

Beck Wright, MPH (THEY, THEM)

As Evaluation Lead, Beck directs assessment tool development, data collection, and data analysis activities.

They have served as Evaluation Lead on several large-scale statewide assessment projects for Rede Group since 2019.

PROJECT-SPECIFIC QUALIFICATIONS:

- Evaluation/Project Lead for the Washington State Department of Public Health, Foundation Public Health Services Evaluation. 2019-present
- Co-Project Lead for the Public Health Response to the COVID-19 Pandemic in Oregon (statewide evaluation). 2022-present
- Co-Project Lead for the Clark County Community Health Assessment/Community Health Improvement Planning. 2022-present
- Data Collection Lead for the Marion County Health Equity Assessment. 2021



ANALYST

Alex Muvua (SHE, HER)

As Data and Reporting Manager, Alex manages data collection, training, and technical support processes. She will also coordinate data analysis, interpretation and reporting

She has served as an analyst and project manager for Rede Group since 2016, successfully managing large scale evaluation, technical assistance, and training projects.

PROJECT-SPECIFIC QUALIFICATIONS:

- Data Collection Manager for The Public Health Response to the COVID-19 Pandemic in Oregon (statewide evaluation). 2022-present
- Project Manager for Oregon Health Authority/Oregon Department of Veterans Affairs, Oregon Veterans' Behavioral Health Services Improvement Study. (statewide evaluation). 2019.
- Project Manager for Coalition of Local Health Officials, Public Health Modernization Roadmap and Toolkit. 2018-19



DESIGN LEAD

Erin Charpentier, MFA (SHE, HER)

Erin directs all visual design decisions for project deliverables, including visual identity, reports, data visualizations, system maps, and any other collateral materials. She has directed visual design for all Rede Group projects since 2016.

PROJECT-SPECIFIC QUALIFICATIONS:

- Design Lead for the Washington State Department of Public Health, [Foundation Public Health Services Evaluation](#). 2019-present
- Design Lead for Coalition of Local Health Officials, [Public Health Modernization Roadmap and Toolkit](#). 2018
- Design Lead for [The Public Health Response to the COVID-19 Pandemic in Oregon](#) (statewide evaluation). 2022-present
- Design Lead for Oregon Health Authority/Oregon Department of Veterans Affairs, [Oregon Veterans' Behavioral Health Services Improvement Study](#). (statewide evaluation). 2019.



Wisconsin Public Health Infrastructure (PHI) Grant

Aim: By 2027, our statewide governmental public health system to be equipped with the financial and human resources needed to provide all Foundational Capabilities.

Three systemwide assessments will inform gaps and pathways toward creating a modern public health systems in Wisconsin.

01

FPHS COST AND
CAPACITY
ASSESSMENT

02

Workforce
Assessment

03

Public Health
Impact Assessment

FPHS cost and capacity assessment

Lorem ipsum dolor sit amet, consectetur adipiscing elit, sed do eiusmod tempor incididunt ut labore et dolore magna aliqua. Lorem ipsum dolor sit amet, consectetur adipiscing elit, sed do eiusmod tempor incididunt .

WE ARE
HERE

2023

2024



START-UP

APR-MAY

- Assessment preparation materials/training
- Test the PHAB/PHNCI assessment tool(s)
- Administer first wave of assessments

DATA COLLECTION

MAY-AUGUST

- Assessment administered for all LHDs, DPH, and participating Tribes
- Training and technical assistance support for LHDs, DPH, and participating Tribes completing the assessment

ANALYSIS

AUG-OCT

- Analyze assessment results and interpret data with partners

REPORT + PLAN

NOV-JAN

- Develop a communication plan of assessment findings and recommendations for various audiences
- Develop assessment results dissemination products

SHARE FINDINGS

JAN-MAR

- Present assessment findings, recommendations, and communications plan to partners and elected officials

FPHS COST /
CAPACITY
ASSESSMENT

Workforce
Assessment

Public Health
Impact
Assessment



Training and Technical Assistance

1

Rede is developing a training plan now; we will offer training using different training modes

2

Technical assistance will be available from Rede. Health Departments will have multiple ways to access technical assistance

3

We want your input about training and technical assistance

4

The Wisconsin Foundational Public Health Services Cost and Capacity Assessment **Collaboration Space** will house information about the assessment process.
<https://redegroup.co/wi-fphs>



Thank you.